



GUAM POWER AUTHORITY

ATURIDÁT ILEKTRESEDÁT GUAHAN
P.O.BOX 2977 • AGANA, GUAM U.S.A. 96932-2977

September 11, 2015

Honorable Speaker, Judith T. Won Pat, Ed. D.

Office of the Speaker
Chairman on Education & Public Libraries
I Mina'trentai Tres Na Liheslaturan Guahan
33rd Guam Legislature
155 Hesler Place
Hagatna, Guam 96910

Email: speaker@judiwonpat.com


Subject: Guam Power Authority - Fiscal Year 2016 Budget

Dear Speaker Won Pat,

Enclosed is a copy of Guam Power Authority's (GPA) Fiscal Year 2016 Approved Budget for your perusal.

Should you have any questions, please feel free to contact Ms. Cora Montellano, Acting Chief Financial Officer at (671) 648-3066.

Sincerely,


JOHN M. BENAVENTE, P.E.
General Manager

cc: Ms. Cora Montellano, GPA Chief Financial Officer (A)
Ms. Pam Aguigui, GPA Chief Budget Officer

Enclosure

0857

33-15-0857
Office of the Speaker
Judith T. Won Pat, Ed.D

Date: 09-15-15
Time: 2:40pm
Received By: [Signature]

2015 SEP 15 PM 3:47

GUAM POWER AUTHORITY

FISCAL YEAR 2016 APPROVED BUDGET

August 25, 2015



<u>TABLE OF CONTENTS</u>	
MISSION AND VISION STATEMENT	1
GPA OVERALL ORGANIZATIONAL CHART	2
OVERALL O&M SUMMARY	3
GM (CCU)	4
BOARD	5
GENERAL MANAGER	6
FACILITIES	7
INTERNAL AUDIT	8
ASSISTANT GENERAL MANAGER OPS	9
HUMAN RESOURCES	10
APPRENTICES	11
PROCUREMENT	12
WAREHOUSE	13
TRANSPORTATION	14
CUSTOMER SERVICE	15
SAFETY	16
PUBLIC INFORMATION OFFICE (PIO)	17
BUDGET	18
CHIEF FINANCIAL OFFICER	19
COMPUTER SERVICES	20
ACCOUNTING	21
PLANNING & REGULATORY	22
ENGINEERING	23
GENERATION ADMIN	24
CABRAS 1 & 2	25-26
DIESEL PLANT	27
CENTRAL MAINTENANCE	28
GAS TURBINE	29
WATER SYSTEM	30
CABRAS 3&4	31
T& D ADMIN	32
OVERHEAD	33
SUBSTATION	34
UNDERGROUND	35
METER/RELAY	36
PSCC	37
SPORD	38
CIP SUMMARY	39

GUAM POWER AUTHORITY

Mission Statement:

We provide our island community with reliable, efficient, safe and environmentally responsible energy services in a professional, innovative, economical and service oriented manner.

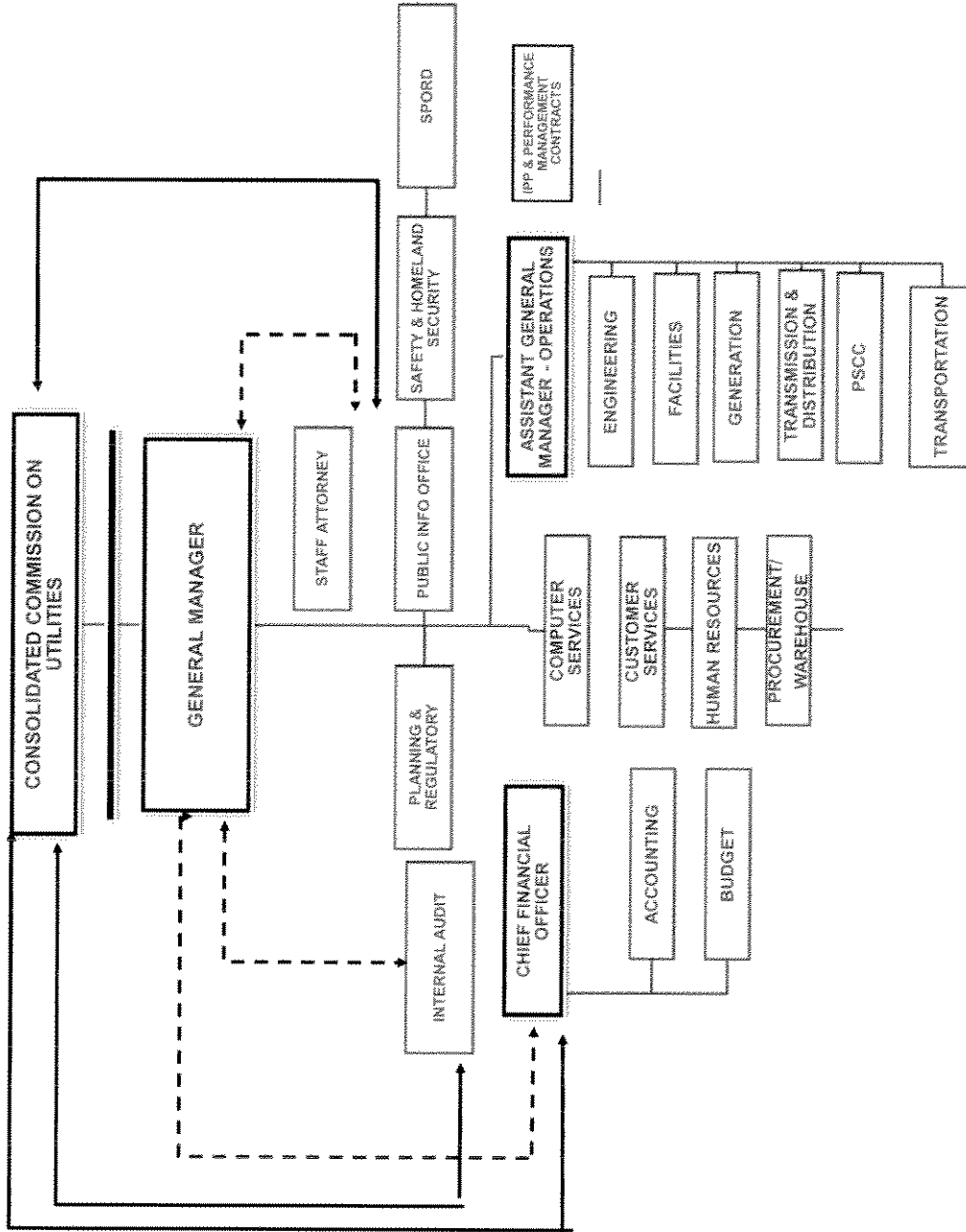
Vision Statement:

GPA will be the best utility providing outstanding energy services to our island community.

Critical Success Factor (CSF) Strategic Goals:

- 1. Achieve Superior Customer Service**
- 2. Achieve High System Reliability**
- 3. Become Financially Sound and Stable**
- 4. Commit to Product Affordability**
- 5. Commit to Environmental Stewardship and Protect our island**
- 6. Optimize Use of Technology**
- 7. Sustain Outstanding Leadership**

GUAM POWER AUTHORITY
 APPROVED FISCAL YEAR 2016
 TOTAL FILLED POSITIONS - 490
 TOTAL VACANT POSITIONS - 20
 GRAND TOTAL - 510



**GUAM POWER AUTHORITY
FISCAL YEAR 2016
OPERATIONS AND MAINTENANCE (O&M)
SUMMARY BY MAJOR CATEGORY**

ROW #	DESCRIPTION	FY 2016 CCU APPROVED BUDGET 08/25/15
1	NO. OF EMPLOYEES	510
2		
3	REGULAR	\$ 27,666,287
4	OVERTIME	\$ 1,346,921
5	PREMIUM	\$ 190,123
6	EMPLOYEES BENEFITS	\$ 11,441,785
7	RETIRES' BENEFITS	\$ 3,900,000
8	TOTAL LABOR	\$ 44,545,117
9		
10	CONTRACTS	\$ 18,183,715
11	UTILITIES/COMMUNICATIONS	\$ 2,316,239
12	OPERATING SUPPLIES	\$ 4,320,591
13	OFFICE SUPPLIES	\$ 171,260
14	TRAVEL	\$ 290,000
15	MISCELLANEOUS	\$ 2,342,000
16	TRAINING	\$ 247,500
17	INSURANCE	\$ 7,172,830
18	OTHER ADMINISTRATIVE	\$ 97,800
19	BAD DEBTS	\$ 1,100,000
20	TOTAL NON-LABOR	\$ 36,241,935
21		
22	TOTAL LABOR & NON-LABOR	\$ 80,787,052
23		
24	LESS CAPITALIZED O&M	\$ (5,655,094)
25		
26	GRAND TOTAL	\$ 75,131,958

GUAM POWER AUTHORITY
FISCAL YEAR 2016 OPERATIONS AND MAINTENANCE (O&M)
CCU APPROVED 8-25-15

SECTION	OBJ CODE	DESCRIPTION	FY 2016 CCU APPROVED BUDGET 08/25/15
GM CCU	00	Number of Employees	1
GM CCU	01	Regular	\$ 85,108
GM CCU	04.1	Employee Benefits	\$ 35,609
		TOTAL GM CCU	\$ 120,717

GUAM POWER AUTHORITY
FISCAL YEAR 2016 OPERATIONS AND MAINTENANCE (O&M)
CCU APPROVED 8-25-15

SECTION	OBJ CODE	DESCRIPTION	FY 2016 CCU APPROVED BUDGET 08/25/15
BOARD	00	Number of Employees	2
BOARD	01	Regular	\$ 199,177
BOARD	04.1	Employee Benefits	\$ 83,335
BOARD	32	Maint. of office equipment	\$ 18,700
BOARD	43	Other Contractual Services	\$ 15,000
BOARD	65	Office Supplies	\$ 2,200
BOARD	73	Board Fees	\$ 30,000
BOARD	79	P.U.C.	\$ 500,000
BOARD	82	Other (Board Expense)	\$ 11,500
		TOTAL BOARD	\$ 859,912

GUAM POWER AUTHORITY
FISCAL YEAR 2016 OPERATIONS AND MAINTENANCE (O&M)
CCU APPROVED 8-25-15

SECTION	OBJ CODE	DESCRIPTION	FY 2016 CCU APPROVED BUDGET 08/25/15
GENERAL MGR.	00	Number of Employees	4
GENERAL MGR.	01	Regular	\$ 391,260
GENERAL MGR.	03	Overtime/Comptime	\$ 1,346,921
GENERAL MGR.	04.1	Employee Benefits	\$ 163,703
GENERAL MGR.	04.3	Retirees (Supplemental/Ins premiums)	\$ 3,900,000
GENERAL MGR.	65	Office Supplies	\$ 4,500
GENERAL MGR.	68	Xerox Supplies	\$ 1,000
GENERAL MGR.	76	Dues & Subscription	\$ 110,000
GENERAL MGR.	81	Off-Island Travel	\$ 280,000
GENERAL MGR.	82	Others: Employee Relations	\$ 5,000
		TOTAL GENERAL MGR.	\$ 6,202,384

GUAM POWER AUTHORITY
FISCAL YEAR 2016 OPERATIONS AND MAINTENANCE (O&M)
CCU APPROVED 8-25-15

SECTION	OBJ CODE	DESCRIPTION	FY 2016 CCU APPROVED BUDGET 08/25/15
FACILITIES	00	Number of Employees	8
FACILITIES	01	Regular	\$ 357,867
FACILITIES	04.1	Employee Benefits	\$ 149,732
FACILITIES	11	Rental (Julale)	\$ 65,934
FACILITIES	14	Land Lease (Transp/Substa/Pole Yard)	\$ 66,262
FACILITIES	17	Other Rental	\$ 188,619
FACILITIES	23	Security Guard Services	\$ 511,000
FACILITIES	28	Building Maintenance	\$ 250,000
FACILITIES	29	Grounds Maintenance	\$ 194,451
FACILITIES	32	Maint. of office equipment	\$ 8,000
FACILITIES	35	Other Maintenance	\$ 5,000
FACILITIES	38	Utilities - Water/Power	\$ 1,500,000
FACILITIES	39	Telephone - Local	\$ 330,125
FACILITIES	42	Courier Services	\$ 55,710
FACILITIES	43	Other Contractual Services	\$ 10,000
FACILITIES	57	Gases	\$ 1,000
FACILITIES	64	Janitorial Supplies	\$ 40,000
FACILITIES	65	Office Supplies	\$ 1,000
FACILITIES	68	Xerox Supplies	\$ 20,000
		TOTAL FACILITIES	\$ 3,754,700

GUAM POWER AUTHORITY
FISCAL YEAR 2016 OPERATIONS AND MAINTENANCE (O&M)
CCU APPROVED 8-25-15

SECTION	OBJ CODE	DESCRIPTION	FY 2016 CCU APPROVED BUDGET 08/25/15
INTERNAL AUDIT	00	Number of Employees	4
INTERNAL AUDIT	01	Regular	\$ 218,243
INTERNAL AUDIT	01.1	Regular - Detail Appt.	\$ 1,000
INTERNAL AUDIT	03	Premium	\$ 500
INTERNAL AUDIT	04.1	Employee Benefits	\$ 91,313
INTERNAL AUDIT	43	Other Contractual Services	\$ 300
INTERNAL AUDIT	62	Other Materials	\$ 200
INTERNAL AUDIT	65	Office Supplies	\$ 4,000
INTERNAL AUDIT	69	Coveralls/Uniforms	\$ 1,500
INTERNAL AUDIT	70	Tools	\$ 500
INTERNAL AUDIT	71	Lead Seals (LockStraps)	\$ 5,000
		TOTAL INTERNAL AUDIT	\$ 322,556

**GUAM POWER AUTHORITY
FISCAL YEAR 2016 OPERATIONS AND MAINTENANCE (O&M)
CCU APPROVED 8-25-15**

SECTION	OBJ CODE	DESCRIPTION	FY 2016 CCU APPROVED BUDGET 08/25/15
A.G.M.O.	00	Number of Employees	2
A.G.M.O.	01	Regular	\$ 165,372
A.G.M.O.	04.1	Employee Benefits	\$ 69,192
A.G.M.O.	07	Accrued Holiday	\$ 1,000
A.G.M.O.	65	Office Supplies	\$ 1,500
A.G.M.O.	85	Lbr cost chrgd to W.O.	\$ (112,944)
		TOTAL A.G.M.O.	\$ 124,120

GUAM POWER AUTHORITY
FISCAL YEAR 2016 OPERATIONS AND MAINTENANCE (O&M)
CCU APPROVED 8-25-15

SECTION	OBJ CODE	DESCRIPTION	FY 2016 CCU APPROVED BUDGET 08/25/15
HUMAN RES.	00	Number of Employees	10
HUMAN RES.	01	Regular	\$ 517,394
HUMAN RES.	01.1	Regular - Detail Appt.	\$ 4,500
HUMAN RES.	03	Premium	\$ 200
HUMAN RES.	04.1	Employee Benefits	\$ 216,478
HUMAN RES.	07	Accrued Holiday	\$ 500
HUMAN RES.	27	Other Professional services	\$ 241,795
HUMAN RES.	65	Office Supplies	\$ 5,600
HUMAN RES.	67	Printed Forms	\$ 880
HUMAN RES.	77	Training & Materials	\$ 200,000
HUMAN RES.	78	Ads & Radio Announcements	\$ 2,000
		TOTAL HUMAN RESOURCES	\$ 1,189,347

GUAM POWER AUTHORITY
FISCAL YEAR 2016 OPERATIONS AND MAINTENANCE (O&M)
CCU APPROVED 8-25-15

SECTION	OBJ CODE	DESCRIPTION	FY 2016 CCU APPROVED BUDGET 08/25/15
APPRENTICES	00	Number of Employees	0
APPRENTICES	01	Regular	\$ 709,424
APPRENTICES	03	Premium	\$ 1,027
APPRENTICES	04.1	Employee Benefits	\$ 283,770
APPRENTICES	07	Holiday	\$ 5,000
APPRENTICES	27	Other Professional services	\$ 50,000
APPRENTICES	66	Safety Supplies	\$ 5,250
APPRENTICES	70	Tools	\$ 7,000
APPRENTICES	77	Training & Materials	\$ 50,392
APPRENTICES	85	Lbr cost chrgd to W.O.	\$ (195,691)
		TOTAL APPRENTICES	\$ 916,172

**GUAM POWER AUTHORITY
FISCAL YEAR 2016 OPERATIONS AND MAINTENANCE (O&M)
CCU APPROVED 8-25-15**

SECTION	OBJ CODE	DESCRIPTION	FY 2016 CCU APPROVED BUDGET 08/25/15
PROCUREMENT	00	Number of Employees	10
PROCUREMENT	01	Regular	\$ 441,012
PROCUREMENT	01.1	Regular - Detail Appt.	\$ 2,750
PROCUREMENT	03	Premium	\$ 550
PROCUREMENT	04.1	Employee Benefits	\$ 184,519
PROCUREMENT	08	Employee Reclassification	\$ 2,000
PROCUREMENT	32	Maint. of office equipment	\$ 18,100
PROCUREMENT	65	Office Supplies	\$ 6,500
PROCUREMENT	67	Printed Forms	\$ 550
PROCUREMENT	68	Xerox Supplies	\$ 1,100
PROCUREMENT	78	Ads & Radio Announcements	\$ 75,000
		TOTAL PROCUREMENT	\$ 732,081

GUAM POWER AUTHORITY
FISCAL YEAR 2016 OPERATIONS AND MAINTENANCE (O&M)
CCU APPROVED 8-25-15

SECTION	OBJ CODE	DESCRIPTION	FY 2016 CCU APPROVED BUDGET 08/25/15
WAREHOUSE	00	Number of Employees	10
WAREHOUSE	01	Regular	\$ 378,617
WAREHOUSE	01.1	Regular - Detail Appt.	\$ 1,000
WAREHOUSE	03	Premium	\$ 250
WAREHOUSE	04.1	Employee Benefits	\$ 158,413
WAREHOUSE	08	Employee Reclassification	\$ 1,000
WAREHOUSE	35	Other Maintenance	\$ 18,600
WAREHOUSE	56	Chemicals	\$ 1,500
WAREHOUSE	62	Other Materials	\$ 12,000
WAREHOUSE	65	Office Supplies	\$ 4,000
WAREHOUSE	70	Tools	\$ 1,600
WAREHOUSE	85	Lbr cost chrgd to W.O.	\$ (356,957)
		TOTAL WAREHOUSE	\$ 220,023

GUAM POWER AUTHORITY
FISCAL YEAR 2016 OPERATIONS AND MAINTENANCE (O&M)
CCU APPROVED 8-25-15

SECTION	OBJ CODE	DESCRIPTION	FY 2016 CCU APPROVED BUDGET 08/25/15
TRANSPORTATION	00	Number of Employees	12
TRANSPORTATION	01	Regular	\$ 616,715
TRANSPORTATION	01.1	Regular - Detail Appt.	\$ 3,000
TRANSPORTATION	03	Premium	\$ 1,500
TRANSPORTATION	04.1	Employee Benefits	\$ 258,034
TRANSPORTATION	07	Holiday	\$ 1,000
TRANSPORTATION	30	Heavy/equipment repairs	\$ 100,000
TRANSPORTATION	31	Vehicle Maintenance	\$ 112,000
TRANSPORTATION	35	Other Maintenance	\$ 2,000
TRANSPORTATION	43	Other Contractual Services	\$ 200,000
TRANSPORTATION	48	EPA & Others	\$ 1,000
TRANSPORTATION	54	Vehicle & Heavy Equipment Parts	\$ 370,000
TRANSPORTATION	56	Chemicals	\$ 3,000
TRANSPORTATION	57	Gases	\$ 750
TRANSPORTATION	58	Lubrication	\$ 30,000
TRANSPORTATION	59	Diesel Fuel	\$ 157,000
TRANSPORTATION	60	Gasoline Fuel	\$ 200,000
TRANSPORTATION	61	Tires	\$ 90,000
TRANSPORTATION	65	Office Supplies	\$ 1,000
TRANSPORTATION	70	Tools	\$ 2,000
TRANSPORTATION	85	Lbr cost chrgd to W.O.	\$ (612,180)
		TOTAL TRANSPORTATION	\$ 1,536,819

GUAM POWER AUTHORITY
FISCAL YEAR 2016 OPERATIONS AND MAINTENANCE (O&M)
CCU APPROVED 8-25-15

SECTION	OBJ CODE	DESCRIPTION	FY 2016 CCU APPROVED BUDGET 08/25/15
CUSTOMER SERV	00	Number of Employees	58
CUSTOMER SERV	01	Regular	\$ 2,049,265
CUSTOMER SERV	01.1	Regular - Detail Appt.	\$ 5,000
CUSTOMER SERV	03	Premium	\$ 2,500
CUSTOMER SERV	04.1	Employee Benefits	\$ 857,413
CUSTOMER SERV	07	Holiday	\$ 1,200
CUSTOMER SERV	08	Employee Reclassification	\$ 3,000
CUSTOMER SERV	23	Armored Car Services	\$ 20,400
CUSTOMER SERV	27	Other Professional Services	\$ 7,000
CUSTOMER SERV	43	Other Contractual Services	\$ 60,080
CUSTOMER SERV	49	Conductors, Line Hardware	\$ 1,700
CUSTOMER SERV	50	Meter Test Parts, Etc.	\$ 8,000
CUSTOMER SERV	64	Janitorial Supplies	\$ 5,000
CUSTOMER SERV	65	Office Supplies	\$ 13,000
CUSTOMER SERV	66	Safety Supplies	\$ 1,500
CUSTOMER SERV	67	Printed Forms	\$ 2,000
CUSTOMER SERV	68	Xerox Supplies	\$ 600
CUSTOMER SERV	69	Coveralls/Uniforms	\$ 10,000
CUSTOMER SERV	75	Collection Fees	\$ 1,275,000
CUSTOMER SERV	82	Others: Employee Relations	\$ 1,300
CUSTOMER SERV	85	Lbr cost chrgd to W.O.	\$ (69,488)
		TOTAL CUSTOMER SERV.	\$ 4,254,470

GUAM POWER AUTHORITY
FISCAL YEAR 2016 OPERATIONS AND MAINTENANCE (O&M)
CCU APPROVED 8-25-15

SECTION	OBJ CODE	DESCRIPTION	FY 2016 CCU APPROVED BUDGET 08/25/15
SAFETY	00	Number of Employees	7
SAFETY	01	Regular	\$ 310,614
SAFETY	01.1	Regular - Detail Appt.	\$ 1,500
SAFETY	03	Premium	\$ 300
SAFETY	04.1	Employee Benefits	\$ 129,961
SAFETY	07	Holiday	\$ 400
SAFETY	27	Other Professional Services	\$ 35,000
SAFETY	36	Insurance - Workman's Comp.	\$ 150,000
SAFETY	57	Gases	\$ 2,400
SAFETY	65	Office Supplies	\$ 1,800
SAFETY	66	Safety Supplies	\$ 80,000
SAFETY	69	Coveralls/Uniforms	\$ 9,000
SAFETY	77	Training & Materials	\$ 1,000
		TOTAL SAFETY	\$ 721,975

GUAM POWER AUTHORITY
FISCAL YEAR 2016 OPERATIONS AND MAINTENANCE (O&M)
CCU APPROVED 8-25-15

SECTION	OBJ CODE	DESCRIPTION	FY 2016 CCU APPROVED BUDGET 08/25/15
P.I.O.	00	Number of Employees	3
P.I.O.	01	Regular	\$ 218,087
P.I.O.	03	Premium	\$ 100
P.I.O.	04.1	Employee Benefits	\$ 91,248
P.I.O.	08	Employee Reclassification	\$ 2,000
P.I.O.	27	Other Professional Services	\$ 40,000
P.I.O.	43	Other Contractual Services	\$ 131,000
P.I.O.	65	Office Supplies	\$ 3,500
P.I.O.	78	Ads & Radio Announcements	\$ 200,000
P.I.O.	82	Others: Employee Relations	\$ 80,000
		TOTAL P.I.O.	\$ 765,935

**GUAM POWER AUTHORITY
FISCAL YEAR 2016 OPERATIONS AND MAINTENANCE (O&M)
CCU APPROVED 8-25-15**

SECTION	OBJ CODE	DESCRIPTION	FY 2016 CCU APPROVED BUDGET 08/25/15
BUDGET	00	Number of Employees	4
BUDGET	01	Regular	\$ 251,704
BUDGET	01.1	Regular - Detail Appt.	\$ 1,000
BUDGET	03	Premium	\$ 50
BUDGET	04.1	Employee Benefits	\$ 105,313
BUDGET	65	Office Supplies	\$ 3,000
		TOTAL BUDGET	\$ 361,067

GUAM POWER AUTHORITY
FISCAL YEAR 2016 OPERATIONS AND MAINTENANCE (O&M)
CCU APPROVED 8-25-15

SECTION	OBJ CODE	DESCRIPTION	FY 2016 CCU APPROVED BUDGET 08/25/15
C.F.O.	00	Number of Employees	6
C.F.O.	01	Regular	\$ 460,739
C.F.O.	01.1	Regular - Detail Appt.	\$ 3,000
C.F.O.	03	Premium	\$ 500
C.F.O.	04.1	Employee Benefits	\$ 192,773
C.F.O.	07	Holiday	\$ 500
C.F.O.	18	Financial Consultant	\$ 85,000
C.F.O.	21	Audit Fee Financial	\$ 150,000
C.F.O.	27	Other Professional Services	\$ 125,000
C.F.O.	36	Insurance/Injuries/Damages	\$ 6,972,830
C.F.O.	36	Damage Claims	\$ 50,000
C.F.O.	43	Other Contractual Services	\$ 395,546
C.F.O.	65	Office Supplies	\$ 13,000
C.F.O.	74	Trustee / Bank Commission Fees	\$ 150,000
C.F.O.	91	Provision for bad debts	\$ 1,100,000
		TOTAL C.F.O.	\$ 9,698,888

GUAM POWER AUTHORITY
FISCAL YEAR 2016 OPERATIONS AND MAINTENANCE (O&M)
CCU APPROVED 8-25-15

SECTION	OBJ CODE	DESCRIPTION	FY 2016 CCU APPROVED BUDGET 08/25/15
COMPUTER SYSTEM	00	Number of Employees	14
COMPUTER SYSTEM	01	Regular	\$ 730,995
COMPUTER SYSTEM	01.1	Regular - Detail Appt.	\$ 5,000
COMPUTER SYSTEM	03	Premium	\$ 2,750
COMPUTER SYSTEM	04.1	Employee Benefits	\$ 305,848
COMPUTER SYSTEM	07	Holiday	\$ 5,500
COMPUTER SYSTEM	08	Employee Reclassification	\$ 4,000
COMPUTER SYSTEM	27	Other Professional Services	\$ 437,000
COMPUTER SYSTEM	32	Maint. of office equipment	\$ 1,349,083
COMPUTER SYSTEM	35	Other Maintenance	\$ 289,414
COMPUTER SYSTEM	43	Other Contractual Services	\$ 59,000
COMPUTER SYSTEM	63	Data Processing Supplies	\$ 19,954
COMPUTER SYSTEM	65	Office Supplies	\$ 10,800
COMPUTER SYSTEM	85	Lbr cost chrgd to W.O.	\$ (57,233)
		TOTAL COMPUTER SERVICE	\$ 3,162,111

**GUAM POWER AUTHORITY
FISCAL YEAR 2016 OPERATIONS AND MAINTENANCE (O&M)
CCU APPROVED 8-25-15**

SECTION	OBJ CODE	DESCRIPTION	FY 2016 CCU APPROVED BUDGET 08/25/15
ACCOUNTING	00	Number of Employees	17
ACCOUNTING	01	Regular	\$ 1,057,379
ACCOUNTING	01.1	Regular - Detail Appt.	\$ 3,000
ACCOUNTING	03	Premium	\$ 2,000
ACCOUNTING	04.1	Employee Benefits	\$ 442,407
ACCOUNTING	07	Holiday	\$ 5,000
ACCOUNTING	08	Employee Reclassification	\$ 2,000
ACCOUNTING	32	Maint. of office equipment	\$ 4,000
ACCOUNTING	37	Postage	\$ 402,000
ACCOUNTING	62	Other Materials	\$ 6,000
ACCOUNTING	65	Office Supplies	\$ 6,000
ACCOUNTING	67	Printed Forms	\$ 49,000
ACCOUNTING	77	Training & Materials	\$ 3,500
ACCOUNTING	85	Lbr cost chrgd to W.O.	\$ (103,963)
		TOTAL ACCOUNTING	\$1,878,323

GUAM POWER AUTHORITY
FISCAL YEAR 2016 OPERATIONS AND MAINTENANCE (O&M)
CCU APPROVED 8-25-15

SECTION	OBJ CODE	DESCRIPTION	FY 2016 CCU APPROVED BUDGET 08/25/15
PLANNING & REG	00	Number of Employees	9
PLANNING & REG	01	Regular	\$ 606,469
PLANNING & REG	01.1	Regular - Detail Appt.	\$ 3,000
PLANNING & REG	03	Premium	\$ 250
PLANNING & REG	04.1	Employee Benefits	\$ 253,746
PLANNING & REG	07	Holiday	\$ 1,500
PLANNING & REG	08	Employee Reclassification	\$ 2,000
PLANNING & REG	15	Heavy Equipment Rental	\$ 10,000
PLANNING & REG	26	EPA Services	\$ 885,000
PLANNING & REG	27	Other Professional Services	\$ 475,000
PLANNING & REG	32	Maint. of office equipment	\$ 2,000
PLANNING & REG	48	EPA & Others	\$ 20,000
PLANNING & REG	65	Office Supplies	\$ 1,500
PLANNING & REG	69	Coveralls/Uniforms	\$ 1,000
PLANNING & REG	77	Training & Materials	\$ 3,000
		TOTAL PLANNING & REG.	\$ 2,264,465

GUAM POWER AUTHORITY
FISCAL YEAR 2016 OPERATIONS AND MAINTENANCE (O&M)
CCU APPROVED 8-25-15

SECTION	OBJ CODE	DESCRIPTION	FY 2016 CCU APPROVED BUDGET 08/25/15
ENGINEERING	00	Number of Employees	36
ENGINEERING	01	Regular	\$ 2,465,770
ENGINEERING	01.1	Regular - Detail Appt.	\$ 3,000
ENGINEERING	03	Premium	\$ 1,050
ENGINEERING	04.1	Employee Benefits	\$ 1,031,678
ENGINEERING	08	Employee Reclassification	\$ 13,200
ENGINEERING	24	Engineering Consultant	\$ 250,000
ENGINEERING	27	Other Professional Services	\$ 95,000
ENGINEERING	32	Maint. of office equipment	\$ 125,837
ENGINEERING	65	Office Supplies	\$ 12,000
ENGINEERING	67	Printed Forms	\$ 1,000
ENGINEERING	68	Xerox Supplies	\$ 3,700
ENGINEERING	70	Tools	\$ 1,000
ENGINEERING	85	Lbr cost chrgd to W.O.	\$ (1,648,165)
		TOTAL ENGINEERING	\$ 2,355,070

**GUAM POWER AUTHORITY
FISCAL YEAR 2016 OPERATIONS AND MAINTENANCE (O&M)
CCU APPROVED 8-25-15**

SECTION	OBJ CODE	DESCRIPTION	FY 2016 CCU APPROVED BUDGET 08/25/15
GEN. ADMIN	00	Number of Employees	12
GEN. ADMIN	01	Regular	\$ 839,235
GEN. ADMIN	01.1	Regular - Detail Appt.	\$ 20,000
GEN. ADMIN	03	Premium	\$ 300
GEN. ADMIN	04.1	Employee Benefits	\$ 351,136
GEN. ADMIN	07	Holiday	\$ 5,000
GEN. ADMIN	08	Employee Reclassification	\$ 5,000
GEN. ADMIN	15	Heavy Equipment Rental	\$ 15,000
GEN. ADMIN	27	Other Professional Services	\$ 3,425,466
GEN. ADMIN	48	EPA & Others	\$ 3,000
GEN. ADMIN	65	Office Supplies	\$ 7,000
		TOTAL GENERATION ADMIN.	\$ 4,671,137

GUAM POWER AUTHORITY
FISCAL YEAR 2016 OPERATIONS AND MAINTENANCE (O&M)
CCU APPROVED 8-25-15

SECTION	OBJ CODE	DESCRIPTION	FY 2016 CCU APPROVED BUDGET 08/25/15
CABRAS 1 & 2	00	Number of Employees	49
CABRAS 1 & 2	01	Regular	\$ 2,590,733
CABRAS 1 & 2	03	Premium	\$ 50,000
CABRAS 1 & 2	04.1	Employee Benefits	\$ 1,083,963
CABRAS 1 & 2	07	Holiday	\$ 50,000
		TOTAL LABOR	\$ 3,774,696
CABRAS 1 & 2	15	Heavy Equipment Rental	\$ 33,307
CABRAS 1 & 2	17	Other Rental	\$ 16,037
CABRAS 1 & 2	25	Technical Services	\$ 100,000
CABRAS 1 & 2	26	EPA Services	\$ 54,484
CABRAS 1 & 2	27	Other Professional Services	\$ 43,176
CABRAS 1 & 2	29	Grounds Maintenance	\$ 52,428
CABRAS 1 & 2	33	Maint. of Power Plant Acc. Equip.	\$ 100,000
CABRAS 1 & 2	40	Telephone - Overseas	\$ 5,654
CABRAS 1 & 2	43	Other Contractual Services	\$ 80,000
CABRAS 1 & 2	44	Boiler & Associated Eqpt Parts	\$ 100,000
CABRAS 1 & 2	45	Turbine & Associated Eqpt parts	\$ 100,000
CABRAS 1 & 2	46	Accessory Equipment	\$ 50,000
CABRAS 1 & 2	48	EPA & Others	\$ 48,900
CABRAS 1 & 2	49	Wires, etc.	\$ 10,000
CABRAS 1 & 2	55	Other Parts	\$ 90,000
CABRAS 1 & 2	56	Chemicals	\$ 150,000
CABRAS 1 & 2	57	Gases	\$ 72,097
CABRAS 1 & 2	58	Lubrication	\$ 61,000
CABRAS 1 & 2	62	Other Materials	\$ 70,000
CABRAS 1 & 2	65	Office Supplies	\$ 13,000
CABRAS 1 & 2	66	Safety Supplies	\$ 30,000
CABRAS 1 & 2	67	Printed Forms	\$ 3,341

**GUAM POWER AUTHORITY
FISCAL YEAR 2016 OPERATIONS AND MAINTENANCE (O&M)
CCU APPROVED 8-25-15**

SECTION	OBJ CODE	DESCRIPTION	FY 2016 CCU APPROVED BUDGET 08/25/15
CABRAS 1 & 2	68	Xerox Supplies	\$ 4,020
CABRAS 1 & 2	69	Coveralls/Uniforms	\$ 5,140
CABRAS 1 & 2	70	Tools	\$ 12,593
CABRAS 1 & 2	72	Other Supplies	\$ 22,616
CABRAS 1 & 2	77	Training & Materials	\$ 30,000
CABRAS 1 & 2	81	Off-Island Travel	\$ 10,000
		TOTAL NON-LABOR	\$ 1,367,793
		TOTAL CABRAS 1 & 2	\$ 5,142,489

GUAM POWER AUTHORITY
FISCAL YEAR 2016 OPERATIONS AND MAINTENANCE (O&M)
CCU APPROVED 8-25-15

SECTION	OBJ CODE	DESCRIPTION	FY 2016 CCU APPROVED BUDGET 08/25/15
DIESEL PLANT	00	Number of Employees	16
DIESEL PLANT	01	Regular	\$ 825,896
DIESEL PLANT	03	Premium	\$ 6,500
DIESEL PLANT	04.1	Employee Benefits	\$ 345,555
DIESEL PLANT	07	Holiday	\$ 5,500
DIESEL PLANT	08	Employee Reclassification	\$ 4,000
DIESEL PLANT	15	Heavy Equipment Rental	\$ 3,000
DIESEL PLANT	17	Other Rental	\$ 3,000
DIESEL PLANT	27	Other Professional Services	\$ 100,000
DIESEL PLANT	33	Maint. of Power Plant Acc. Equip.	\$ 10,000
DIESEL PLANT	35	Other Maintenance	\$ 900,000
DIESEL PLANT	46	Accessory Equipment	\$ 50,000
DIESEL PLANT	47	Diesel Plant Parts	\$ 60,000
DIESEL PLANT	56	Chemicals	\$ 12,000
DIESEL PLANT	57	Gases	\$ 3,000
DIESEL PLANT	58	Lubrication	\$ 90,000
DIESEL PLANT	62	Other Materials	\$ 20,000
DIESEL PLANT	65	Office Supplies	\$ 800
DIESEL PLANT	66	Safety Supplies	\$ 3,000
DIESEL PLANT	70	Tools	\$ 5,000
		TOTAL DIESEL	\$ 2,447,251

GUAM POWER AUTHORITY
FISCAL YEAR 2016 OPERATIONS AND MAINTENANCE (O&M)
CCU APPROVED 8-25-15

SECTION	OBJ CODE	DESCRIPTION	FY 2016 CCU APPROVED BUDGET 08/25/15
CENTRAL MAINT	00	Number of Employees	27
CENTRAL MAINT	01	Regular	\$ 1,425,788
CENTRAL MAINT	03	Premium	\$ 2,000
CENTRAL MAINT	04.1	Employee Benefits	\$ 596,550
CENTRAL MAINT	07	Holiday	\$ 1,000
CENTRAL MAINT	15	Heavy Equipment Rental	\$ 10,000
CENTRAL MAINT	25	Technical Services	\$ 5,000
CENTRAL MAINT	55	Other Parts	\$ 7,000
CENTRAL MAINT	57	Gases	\$ 8,000
CENTRAL MAINT	58	Lubrication	\$ 1,000
CENTRAL MAINT	62	Other Materials	\$ 15,000
CENTRAL MAINT	70	Tools	\$ 6,000
		TOTAL CENTRAL MAINT.	\$ 2,077,338

GUAM POWER AUTHORITY
FISCAL YEAR 2016 OPERATIONS AND MAINTENANCE (O&M)
CCU APPROVED 8-25-15

SECTION	OBJ CODE	DESCRIPTION	FY 2016 CCU APPROVED BUDGET 08/25/15
COMBUSTION TURB.	00	Number of Employees	12
COMBUSTION TURB.	01	Regular	\$ 621,751
COMBUSTION TURB.	03	Premium	\$ 2,146
COMBUSTION TURB.	04.1	Employee Benefits	\$ 260,141
COMBUSTION TURB.	07	Holiday	\$ 3,000
COMBUSTION TURB.	15	Heavy Equipment Rental	\$ 8,410
COMBUSTION TURB.	25	Technical Services	\$ 32,204
COMBUSTION TURB.	27	Other Professional Services	\$ 5,800
COMBUSTION TURB.	33	Maint. of Power Plant Acc. Equip.	\$ 57,800
COMBUSTION TURB.	35	Other Maintenance	\$ 300,000
COMBUSTION TURB.	43	Other Contractual Services	\$ 950
COMBUSTION TURB.	46	Accessory Equipment	\$ 44,800
COMBUSTION TURB.	47	Diesel Plant Parts	\$ 30,000
COMBUSTION TURB.	56	Chemicals	\$ 30,420
COMBUSTION TURB.	57	Gases	\$ 20,665
COMBUSTION TURB.	58	Lubrication	\$ 2,017
COMBUSTION TURB.	62	Other Materials	\$ 20,000
COMBUSTION TURB.	65	Office Supplies	\$ 1,200
COMBUSTION TURB.	67	Printed Forms	\$ 300
COMBUSTION TURB.	69	Coveralls/Uniforms	\$ 900
COMBUSTION TURB.	70	Tools	\$ 5,000
		TOTAL COMBUSTION TURBINE	\$ 1,447,504

GUAM POWER AUTHORITY
FISCAL YEAR 2016 OPERATIONS AND MAINTENANCE (O&M)
CCU APPROVED 8-25-15

SECTION	OBJ CODE	DESCRIPTION	FY 2016 CCU APPROVED BUDGET 08/25/15
WATER SYS. DIV.	00	Number of Employees	6
WATER SYS. DIV.	01	Regular	\$ 325,755
WATER SYS. DIV.	03	Premium	\$ 200
WATER SYS. DIV.	04.1	Employee Benefits	\$ 136,296
WATER SYS. DIV.	07	Holiday	\$ 500
WATER SYS. DIV.	15	Heavy Equipment Rental	\$ 15,500
WATER SYS. DIV.	25	Technical Services	\$ 10,400
WATER SYS. DIV.	33	Maint. of Power Plant Acc. Equip.	\$ 10,200
WATER SYS. DIV.	47	Diesel Plant Parts	\$ 25,200
WATER SYS. DIV.	55	Other Parts	\$ 10,200
WATER SYS. DIV.	56	Chemicals	\$ 3,500
WATER SYS. DIV.	58	Lubrication	\$ 2,800
WATER SYS. DIV.	62	Other Materials	\$ 26,900
WATER SYS. DIV.	65	Office Supplies	\$ 260
WATER SYS. DIV.	70	Tools	\$ 1,800
		TOTAL WATER SYSTEM	\$ 569,511

GUAM POWER AUTHORITY
FISCAL YEAR 2016 OPERATIONS AND MAINTENANCE (O&M)
CCU APPROVED 8-25-15

SECTION	OBJ CODE	DESCRIPTION	FY 2016 CCU APPROVED BUDGET 08/25/15
CABRAS 3&4	00	Number of Employees	34
CABRAS 3&4	01	Regular	\$ 1,823,907
CABRAS 3&4	03	Premium	\$ 40,000
CABRAS 3&4	04.1	Employee Benefits	\$ 763,123
CABRAS 3&4	07	Holiday	\$ 40,000
CABRAS 3&4	08	Employee Reclassification	\$ 5,000
		TOTAL LABOR	\$ 2,672,030
CABRAS 3&4	15	Heavy Equipment Rental	\$ 3,500
CABRAS 3&4	25	Technical Services	\$ 40,000
CABRAS 3&4	26	EPA Services	\$ 75,000
CABRAS 3&4	27	Other Professional Services	\$ 10,000
CABRAS 3&4	28	Building Maintenance	\$ 18,400
CABRAS 3&4	33	Maint. of Power Plant Acc. Equip.	\$ 28,750
CABRAS 3&4	35	Other Maintenance	\$ 515,960
CABRAS 3&4	37	Postage	\$ 250
CABRAS 3&4	40	Telephone - Overseas	\$ 9,000
CABRAS 3&4	42	Courier Services	\$ 3,500
CABRAS 3&4	46	Accessory Equipment	\$ 100,000
CABRAS 3&4	47	Diesel Plant Parts	\$ 300,000
CABRAS 3&4	48	EPA & Others	\$ 3,000
CABRAS 3&4	56	Chemicals	\$ 35,600
CABRAS 3&4	58	Lubrication	\$ 282,240
CABRAS 3&4	62	Other Materials	\$ 74,723
CABRAS 3&4	65	Office Supplies	\$ 12,500
CABRAS 3&4	66	Safety Supplies	\$ 5,000
CABRAS 3&4	69	Coveralls/Uniforms	\$ 5,000
CABRAS 3&4	70	Tools	\$ 6,000
CABRAS 3&4	72	Other Supplies	\$ 7,200
CABRAS 3&4	77	Training & Materials	\$ 10,000
		TOTAL NON-LABOR	\$ 1,545,623
		TOTAL CABRAS 3 & 4	\$ 4,217,653

GUAM POWER AUTHORITY
FISCAL YEAR 2016 OPERATIONS AND MAINTENANCE (O&M)
CCU APPROVED 8-25-15

SECTION	OBJ CODE	DESCRIPTION	FY 2016 CCU APPROVED BUDGET 08/25/15
T&D ADMIN	00	Number of Employees	10
T&D ADMIN	01	Regular	\$ 647,265
T&D ADMIN	01.1	Regular - Detail Appt.	\$ 5,000
T&D ADMIN	03	Premium	\$ 500
T&D ADMIN	04.1	Employee Benefits	\$ 270,816
T&D ADMIN	07	Holiday	\$ 1,650
T&D ADMIN	08	Employee Reclassification	\$ 15,000
T&D ADMIN	35	Other Maintenance	\$ 15,800
T&D ADMIN	42	Courier Services	\$ 10,000
T&D ADMIN	43	Other Contractual Services	\$ 9,800
T&D ADMIN	55	Other Parts	\$ 2,440
T&D ADMIN	62	Other Materials	\$ 6,800
T&D ADMIN	65	Office Supplies	\$ 11,000
T&D ADMIN	66	Safety Supplies	\$ 25,000
T&D ADMIN	68	Xerox Supplies	\$ 400
T&D ADMIN	69	Coveralls/Uniforms	\$ 15,000
T&D ADMIN	70	Tools	\$ 25,000
T&D ADMIN	85	Lbr cost chrgd to W.O.	(\$227,585)
		TOTAL T & D ADMIN	\$ 833,886

GUAM POWER AUTHORITY
FISCAL YEAR 2016 OPERATIONS AND MAINTENANCE (O&M)
CCU APPROVED 8-25-15

SECTION	OBJ CODE	DESCRIPTION	FY 2016 CCU APPROVED BUDGET 08/25/15
OVERHEAD LINES	00	Number of Employees	44
OVERHEAD LINES	01	Regular	\$ 2,141,141
OVERHEAD LINES	03	Premium	\$ 38,500
OVERHEAD LINES	04.1	Employee Benefits	\$ 895,853
OVERHEAD LINES	07	Holiday	\$ 26,400
OVERHEAD LINES	15	Heavy Equipment Rental	\$ 85,000
OVERHEAD LINES	27	Other Professional Services	\$ 2,750
OVERHEAD LINES	35	Other Maintenance	\$ 825,552
OVERHEAD LINES	43	Other Contractual	\$ 80,000
OVERHEAD LINES	49	Inventory Issues	\$ 275,000
OVERHEAD LINES	55	Other Parts	\$ 4,000
OVERHEAD LINES	56	Chemicals	\$ 600
OVERHEAD LINES	62	Other Materials	\$ 7,700
OVERHEAD LINES	65	Office Supplies	\$ 5,500
OVERHEAD LINES	85	Lbr cost chrgd to W.O.	(\$1,005,427)
		TOTAL OVERHEAD	\$ 3,382,569

GUAM POWER AUTHORITY
FISCAL YEAR 2016 OPERATIONS AND MAINTENANCE (O&M)
CCU APPROVED 8-25-15

SECTION	OBJ CODE	DESCRIPTION	FY 2016 CCU APPROVED BUDGET 08/25/15
SUB/TRANSFORM	00	Number of Employees	18
SUB/TRANSFORM	01	Regular	\$ 969,258
SUB/TRANSFORM	03	Premium	\$ 5,000
SUB/TRANSFORM	04.1	Employee Benefits	\$ 405,538
SUB/TRANSFORM	07	Holiday	\$ 4,400
SUB/TRANSFORM	15	Heavy Equipment Rental	\$ 2,000
SUB/TRANSFORM	17	Other Rental	\$ 1,000
SUB/TRANSFORM	25	Technical Services	\$ 88,340
SUB/TRANSFORM	27	Other Professional Services	\$ 13,700
SUB/TRANSFORM	43	Other Contractual Services	\$ 373,269
SUB/TRANSFORM	48	EPA & Others	\$ 2,200
SUB/TRANSFORM	49	Conductors, Poles & Line Hardwares	\$ 22,000
SUB/TRANSFORM	51	Transformer Repair Parts	\$ 87,600
SUB/TRANSFORM	53	Station Equipment Repair Parts	\$ 80,000
SUB/TRANSFORM	55	Other Parts	\$ 13,570
SUB/TRANSFORM	56	Chemicals	\$ 4,525
SUB/TRANSFORM	57	Gases	\$ 7,000
SUB/TRANSFORM	58	Lubrication	\$ 41,388
SUB/TRANSFORM	62	Other Materials	\$ 42,515
SUB/TRANSFORM	65	Office Supplies	\$ 7,000
SUB/TRANSFORM	85	Lbr cost chrgd to W.O.	(\$195,619)
		TOTAL SUBSTATION	\$ 1,974,684

GUAM POWER AUTHORITY
FISCAL YEAR 2016 OPERATIONS AND MAINTENANCE (O&M)
CCU APPROVED 8-25-15

SECTION	OBJ CODE	DESCRIPTION	FY 2016 CCU APPROVED BUDGET 08/25/15
UNDERGROUND	00	Number of Employees	11
UNDERGROUND	01	Regular	\$ 566,221
UNDERGROUND	03	Premium	\$ 2,420
UNDERGROUND	04.1	Employee Benefits	\$ 236,907
UNDERGROUND	07	Holiday	\$ 2,970
UNDERGROUND	15	Heavy Equipment Rental	\$ 1,500
UNDERGROUND	17	Other Rental	\$ 1,000
UNDERGROUND	27	Other Professional Services	\$ 2,750
UNDERGROUND	29	Grounds Maintenance	\$ 34,752
UNDERGROUND	48	EPA & Others	\$ 700
UNDERGROUND	49	Conductors, Poles & Line Hardware	\$ 165,000
UNDERGROUND	51	Transformer Repair Parts	\$ 15,000
UNDERGROUND	55	Other Parts	\$ 1,500
UNDERGROUND	56	Chemicals	\$ 1,375
UNDERGROUND	58	Lubrication	\$ 330
UNDERGROUND	62	Other Materials	\$ 21,056
UNDERGROUND	65	Office Supplies	\$ 4,600
UNDERGROUND	85	Lbr cost chrgd to W.O.	\$ (251,674)
		TOTAL UNDERGROUND	\$ 806,407

GUAM POWER AUTHORITY
FISCAL YEAR 2016 OPERATIONS AND MAINTENANCE (O&M)
CCU APPROVED 8-25-15

SECTION	OBJ CODE	DESCRIPTION	FY 2016 CCU APPROVED BUDGET 08/25/15
METER/RELAY	00	Number of Employees	20
METER/RELAY	01	Regular	\$ 1,034,312
METER/RELAY	03	Premium	\$ 1,815
METER/RELAY	04.1	Employee Benefits	\$ 432,756
METER/RELAY	07	Holiday	\$ 4,500
METER/RELAY	25	Technical Services	\$ 10,800
METER/RELAY	49	Conductors, Poles & Line Hardwares	\$ 5,000
METER/RELAY	50	Meter Test Parts, Etc.	\$ 40,000
METER/RELAY	55	Other Parts	\$ 8,036
METER/RELAY	56	Chemicals	\$ 400
METER/RELAY	58	Lubrication	\$ 300
METER/RELAY	62	Other Materials	\$ 17,100
METER/RELAY	65	Office Supplies	\$ 3,000
METER/RELAY	67	Printed Forms	\$ 2,000
METER/RELAY	68	Xerox Supplies	\$ 100
METER/RELAY	71	Lead Seals (LockStraps)	\$ 5,000
METER/RELAY	85	Lbr cost chrgd to W.O.	\$ (532,569)
		TOTAL METER RELAY	\$ 1,032,550

GUAM POWER AUTHORITY
FISCAL YEAR 2016 OPERATIONS AND MAINTENANCE (O&M)
CCU APPROVED 8-25-15

SECTION	OBJ CODE	DESCRIPTION	FY 2016 CCU APPROVED BUDGET 08/25/15
P.S.C.C.	00	Number of Employees	23
P.S.C.C.	01	Regular	\$ 1,315,901
P.S.C.C.	01.1	Regular - Detail Appt.	\$ 1,294
P.S.C.C.	03	Premium	\$ 27,984
P.S.C.C.	04.1	Employee Benefits	\$ 550,573
P.S.C.C.	07	Holiday	\$ 30,000
P.S.C.C.	08	Employee Reclassification	\$ 3,000
P.S.C.C.	16	Office Equipment Rental	\$ 145,400
P.S.C.C.	27	Other Professional Services	\$ 82,546
P.S.C.C.	28	Building Maintenance	\$ 4,000
P.S.C.C.	32	Maint. of office equipment	\$ 6,000
P.S.C.C.	34	Radio Maint & Repair	\$ 20,000
P.S.C.C.	35	Other Maintenance	\$ 42,300
P.S.C.C.	43	Other Contractual Services	\$ 83,700
P.S.C.C.	52	SCADA Parts & Accessory	\$ 49,000
P.S.C.C.	56	Chemicals	\$ 600
P.S.C.C.	62	Other Materials	\$ 1,500
P.S.C.C.	65	Office Supplies	\$ 9,000
P.S.C.C.	68	Xerox Supplies	\$ 450
P.S.C.C.	70	Tools	\$ 5,000
P.S.C.C.	85	Lbr cost chrgd to W.O.	\$ (87,582)
		TOTAL P.S.C.C.	\$ 2,290,666

GUAM POWER AUTHORITY
FISCAL YEAR 2016 OPERATIONS AND MAINTENANCE (O&M)
CCU APPROVED 8-25-15

SECTION	OBJ CODE	DESCRIPTION	FY 2016 CCU APPROVED BUDGET 08/25/15
SPORD	00	Number of Employees	11
SPORD	01	Regular	\$ 697,573
SPORD	01.1	Regular - Detail Appt.	\$ 2,000
SPORD	03	Premium	\$ 258
SPORD	04.1	Employee Benefits	\$ 291,864
SPORD	08	Employee Reclassification	\$ 2,000
SPORD	24	Engineering Consultants	\$ 793,000
SPORD	25	Technical Service	\$ 30,000
SPORD	27	Other Professional Svcs	\$ 644,000
SPORD	43	Other Contractual	\$ 533,000
SPORD	65	Office Supplies	\$ 1,500
SPORD	85	Lbr cost chrgd to W.O.	\$ (198,016)
		TOTAL SPORD	\$ 2,797,179
		GRAND TOTAL	\$ 75,131,958

**GUAM POWER AUTHORITY
FISCAL YEAR 2016
SUMMARY OF CAPITAL IMPROVEMENT PROJECTS
CCU APPROVED - 8/25/15**

CIP SUMMARY	FY 2016 APPROVED
REVENUE FUNDED:	
LINE EXTENSIONS	\$ 5,915,353
GENERAL PLANT:	\$ 12,067,780
GRAND TOTAL REVENUE FUNDED CIP	\$ 17,983,133

